



Karndean
Designflooring



St George Community Housing

Social
Housing

The challenge

St George Community Housing is one of the largest community housing providers in NSW. The \$16.5 million development provides homes for more than 8,900 people in 4,700 properties across the Sydney metropolitan region.

The Cartwright development comprises of 64 units across two four-storey buildings. The building includes one and two bedroom units that feature a contemporary open plan living environment.



Sector: Social Housing

Client:

St George
Community Housing

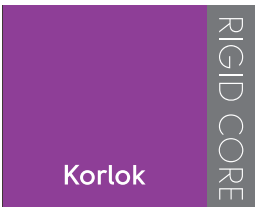
Architect:

DKO Architects

Area: 6,200sqm

Location:

Cartwright, NSW



The solution

St George Community Housing required a modern flooring solution that not only fit the unit style but also ticked all the boxes for building compliance. Angus Nguyen, Development Manager at St George Community Housing explains how they came to the decision to use Korlok by Karndean Designflooring, a rigid core product for this development.

“Korlok was installed into a few of our test apartments so we could see first hand how the product performed. We were really impressed with the results and Korlok proved to be a success in meeting our flooring requirements. That’s when we made the decision to swap the original specification of carpet and tile to Korlok for the entire project. Carpet wears easily and often needs to be replaced every couple of years. Making the decision to use Korlok instead of carpet was going to be a huge cost saving for us in the long term and greatly reduce our maintenance cost.” explained Angus Nguyen. “Durability, ease of installation, acoustic performance and compliance with the Building Code of Australia for multi-story building were some of the key factors that led to our decision that Korlok by Karndean Designflooring would be the best flooring solution for our development.”

Results

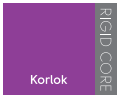
"We found Korlok by Karndean Designflooring incredibly easy to work with! We were really impressed with how speedy it was to do the installation. Due to the quick and easy drop and lock installation method our installers picked up the process straight away. We also found Korlok to be extremely durable and resilient as it withstood the wear and tear during the completion of the build." Ryan L'Estrange, Sales Manager, Carpet Cutters Commercial.

Products used: ■ Washed Grey Ash **RKP8104**





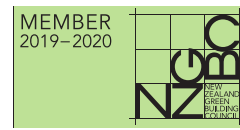
Products specified:



Korlok

	Standard	Result
Size		1420 x 225 mm
Thickness	ISO 24346	6.5 mm
Wear layer		0.5 mm
Guarantee	Commercial Residential	15 years wear* Lifetime wear*
Bevelled edge		Micro

* Subject to terms.



Washed Grey Ash RKP8104

Technical information

To view the full technical specification for each of our product ranges visit our website:

www.karndean.com/commercialtechdata



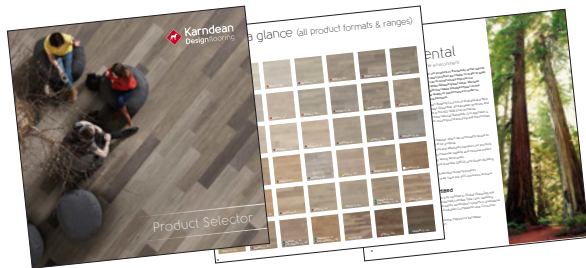
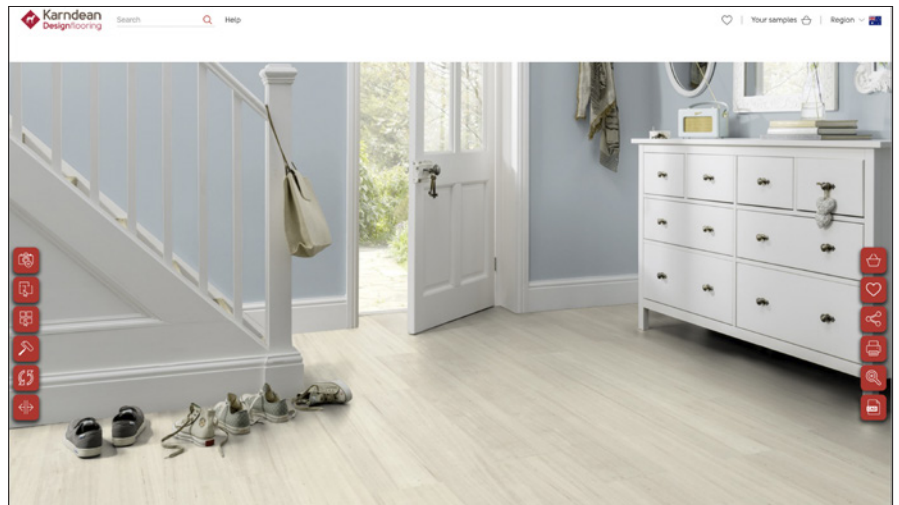
Feeling inspired?

We have a variety of tools available to help you achieve the look you desire for your project:

Commercial website

Our dedicated commercial website is the best resource to finding more information about our products, installation instructions and commercial services available to you.

www.karndean.com/commercial

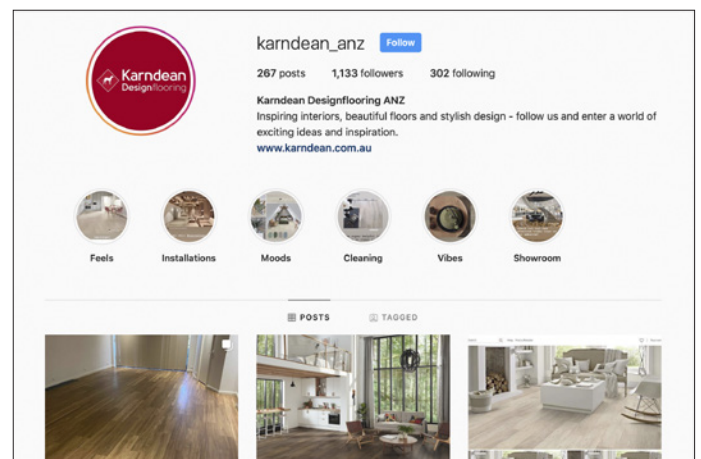
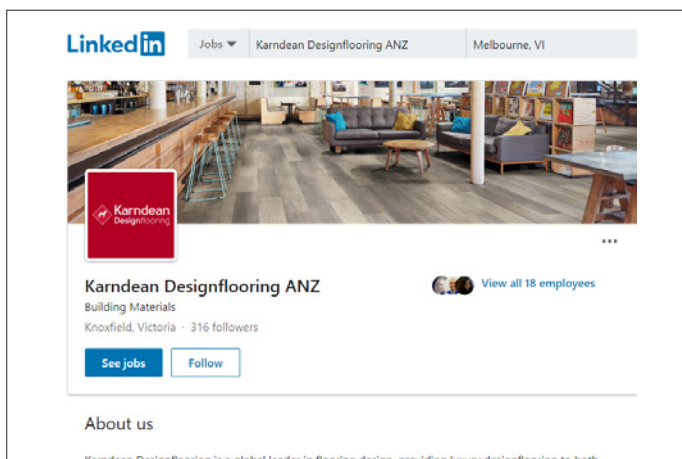


Product Selector

The Product Selector is a specifier's guide to Karndean Designflooring. This comprehensive book features a large plan view swatch and angled laid floor image for every product, along with a product synopsis.

www.karndean.com/productselector

Keep up to date with us:



 Follow us on LinkedIn [Karndean Designflooring ANZ](https://www.linkedin.com/company/karndean-designflooring-anz)

 Follow us on Instagram [karndean_ANZ](https://www.instagram.com/karndean_ANZ)